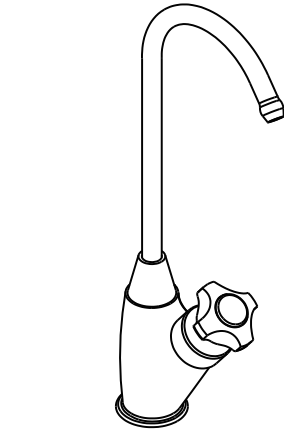


净水龙头  
安装说明书

Water Purifier Faucet  
INSTALLATION INSTRUCTIONS



图片仅供参考  
(款式因型号而异)

Image is for reference only  
(Style varies by model)

如需安装支持，配件丢失等，请联系MOEN。  
(中国) 400-630-8866  
www.moen.cn

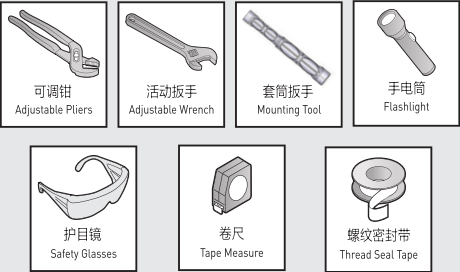
PLEASE CONTACT MOEN FIRST  
For Installation Help, Missing or Replacement  
Parts  
(China) 400-630-8866  
www.moen.cn

推荐工具

为了安全和让安装和替换变得容易，Moen建议您使用以下工具：

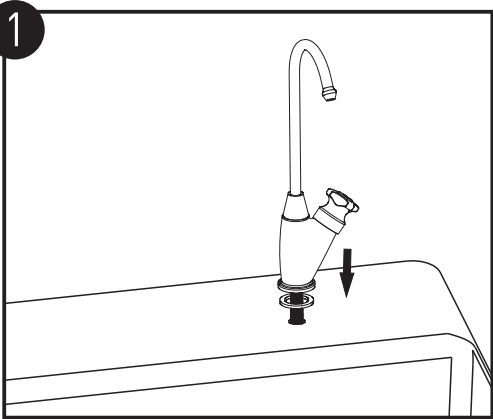
HELPFUL TOOLS

For safety and ease of replacement, Moen recommends the use of these helpful tools.



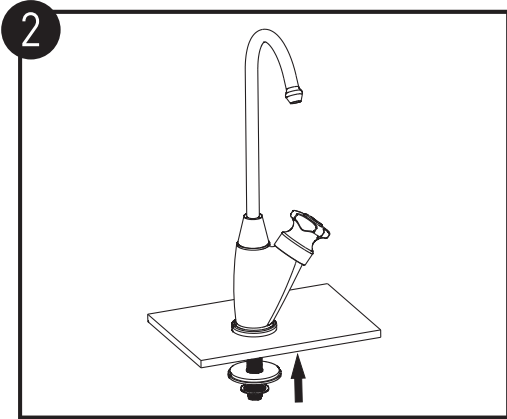
记录购买的型号：  
(保存安装说明书以备将来参考)

Record Purchased Model Number:  
(Save instruction sheet for future reference)



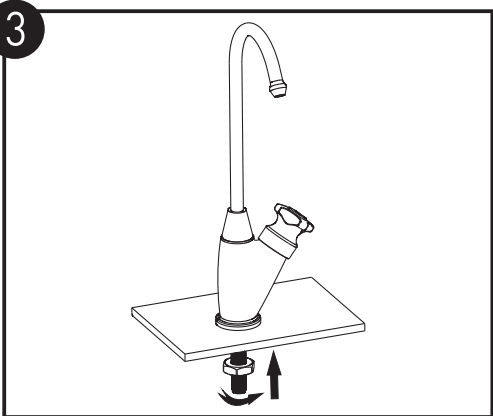
确保安装台面清洁、干燥的情况下，首先将台上橡胶垫圈安装于龙头底部，再将龙头底座贴紧台面，并使净水螺管穿过台面安装孔落于台面下方。

To ensure that the installation table is clean and dry, first install the rubber washer on the bottom of the faucet, then the faucet base is attached to the table, and make the water purification screw pipe fall on the bottom of the table through the installation hole of the table.



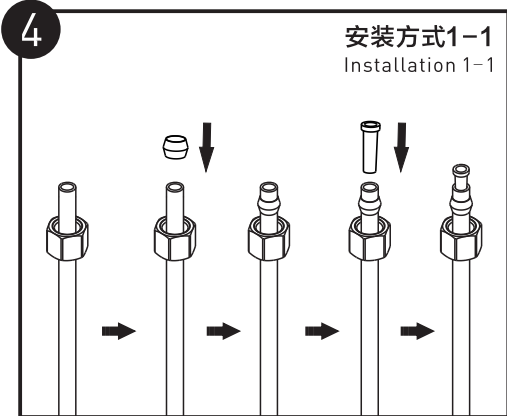
将台下橡胶垫圈、不锈钢垫片及齿形垫圈依次套入净水螺管。

Put the rubber gasket, stainless steel gasket and toothed gasket under the table into the water purification screw in turn.



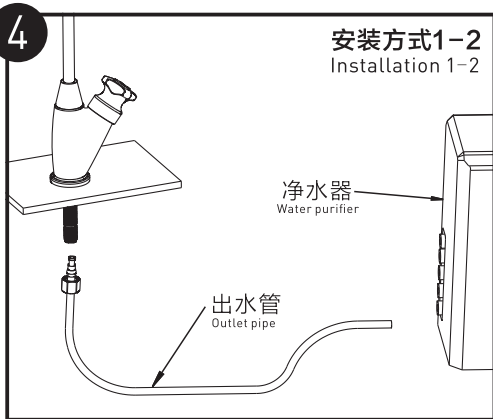
按顺时针方向拧紧安装螺母，需确保产品安装稳固。

Tighten the mounting nut clockwise to ensure the product is firmly installed.



如外接净水器的塑料出水管，请采用安装方式1，如图所示，先将塑料出水管穿过安装螺母及塑料卡圈，再将塑料管装入塑料出水管。

If the plastic outlet pipe of the external water purifier is connected, please use installation method 1, as shown in the figure, first pass the plastic outlet pipe through the installation nut and plastic clamp ring, and then put the plastic pipe into the plastic outlet pipe.

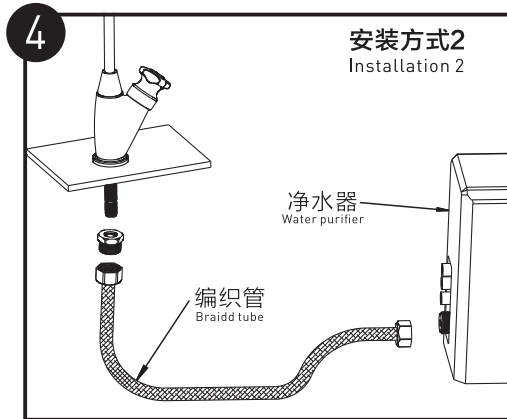


将装好的净水器塑料出水管塞入净水螺母，并拧紧安装螺母，最后打开龙头开关，检查各处连接位置是否有渗漏，若龙头正常出水无渗漏，则本产品安装完成。

Insert the plastic outlet pipe of the water purifier into the water purifier screw, tighten the installation nut, and finally open the faucet switch to check whether there is leakage in the connection positions. If there is no leakage in the normal outlet of the faucet, the installation of the product is completed.

注：本产品不配备净水器出水管。

Note: This product is not equipped with outlet pipe.



如外接编织管，请采用安装方式2，直接用六角螺塞连接净水螺母，然后将编织管与六角螺塞连接即可。最后打开龙头开关，检查各处连接位置是否有渗漏，若龙头正常出水无渗漏，则本产品安装完成。

For external braided pipe, please use installation method 2, directly connect the water purification pipe with hexagonal plug, and then connect the braided pipe with the hexagonal plug. Finally open the faucet switch, check whether there is leakage in the connection position, if the faucet is normal water without leakage, then the installation of the product is completed.

注：本产品不配备编织管。

Note: This product is not equipped with braided pipe.

## 产品售后保修条款

摩恩产品是在高质量标准及生产工艺下制造的，摩恩承诺为消费者购买的洁具产品提供有期限免费保修及终身维修服务。

龙头免费保修期为：阀芯5年，电磁感应器2年，其它附件如淋浴杆、软管、花洒、落水、把手、装饰盖、提拉杆、混水器等保修期均为1年有限。均自消费者购买日（以摩恩产品分销商开具的发票或收据上载明日期为准）起计。

免费保修范围为产品及产品配件（如淋浴杆、软管、花洒、落水、把手、装饰盖、提拉杆、混水器等）由于材质及工艺原因而造成的故障或损坏。免费保修期内，我们将无偿为您提供修理服务及更换发生故障的产品或产品配件。摩恩的售后服务责任仅限于对故障产品的修理，而不延及您因产品故障而发生的其他损失，法律另有规定的除外。

您需了解：产品外观碰伤、刻划痕迹，以及滥用及不正当保养所导致的故障或损坏，均不属于免费保修范围。即使在免费保修期内，属下列（1）-（5）情况之一的，需酌情收取修理费用：

1. 不能出示相符的保修卡和有效购买凭证情况的，
2. 未按使用说明告知的使用方法和注意事项造成的故障，
3. 自行拆卸、维修、改装所造成的故障和损坏，
4. 由于不可抗力等外部原因引起的故障和损坏，
5. 由于运输、搬卸、挤压等造成的损坏。

对于保修期外或不在保修范围内的产品，如需维修，摩恩将酌情收取上门费、人工费及材料费。

本保修条款仅对原始消费者和酒店行业的购买者有效，并不适用于本产品工业、商业、贸易和非酒店行业的使用。

如对本保修条款内容有任何疑问，请拨打400 630 8866 咨询热线，或向当地分销商咨询。

## MOEN LIMITED WARRANTY

We offer limited warranty and lifetime maintenance for Moen products, which are all manufactured with high standards of workmanship.

The period of warranty shall start from the date of purchase of the product (according to the invoice or receipt issued by Moen distributors) and shall cover a period of the following: the warranty period for cartridge is 5 years, the warranty period for solenoid valve sensor is 2 years, the warranty period of other accessories such as shower bar, hose, shower, drain assembly, handle, cover, lift rod, aerator etc. is 1 year.

This warranty is your coverage against material and workmanship malfunction or defects in Moen products or components (such as shower bar, hose, shower, drain assembly, handle, cover, lift rod, aerator etc.). During the warranty period, we offer free maintenance and changing of malfunctioned products or product components. Moen's after sales service liability is limited to the maintenance of faulty items and does not cover your other losses caused by product malfunction, except for otherwise stipulated by law.

Cosmetic damages (scratches, dents, etc.) and malfunction or defects caused by abuse or improper maintenance is not covered by this warranty. Although the warranty period remains valid, in case of the following conditions (1) - (5), the maintenance cost (material cost and labor cost) shall still be charged as the case may be:

1. Corresponding warranty card and valid invoice cannot be presented;
2. Faults were caused by the incompliance with the instructions and precautions provided in the user's manual;
3. Damages and faults were caused by self-actuated dismantling, repair and refit;
4. Faults and damages were caused by external factors such as force majeure;
5. Damages were caused by transportation, unloading and extrusion, etc.

This warranty is valid for the original consumers only (including hotel use), and excludes industrial and commercial use of the product (except for hotel use). This card is only responsible for product maintenance rather than any other liabilities.

In the event that the product requires maintenance but exceeds the warranty period, or that the product is not covered by this warranty, labor cost and material cost shall be charged as the case may be.

Please call 400-630-8866 or contact local dealer for any question.

# MOEN 摩恩

## 合格证

### Compliance Certification

产品名称 净水龙头  
Product Name Water Purifier Faucet

检验员 \_\_\_\_\_  
Inspector \_\_\_\_\_

生产日期 \_\_\_\_\_  
Date of Production \_\_\_\_\_

富俊汇赢科技（上海）有限公司

中国（上海）自由贸易试验区新杨公路  
1800弄1号4幢207室

邮编：201413

Fortune Brands Innovations (Shanghai) Co., Ltd  
Room 207, Building 4, No.1, Lane 1800, Xinyang Highway,  
China (Shanghai) Pilot Free Trade Zone