

# MOEN® 摩恩

## 淋浴杆

安装说明书

## Shower Bar

INSTALLATION INSTRUCTIONS

如需安装支持，配件丢失等，请联系MOEN。  
(中国) 400-630-8866  
www.moen.cn

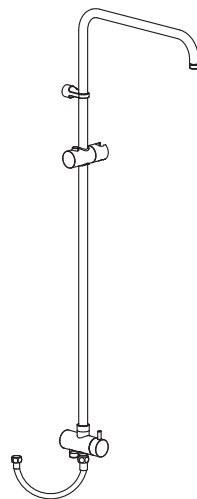
PLEASE CONTACT MOEN FIRST  
For Installation Help, Missing or Replacement  
Parts  
(China) 400-630-8866  
www.moen.cn

### 推荐工具

为了安全和让安装和替换变得容易，Moen建议您使用以下工具：

### HELPFUL TOOLS

For safety and ease of replacement, Moen recommends the use of these helpful tools.

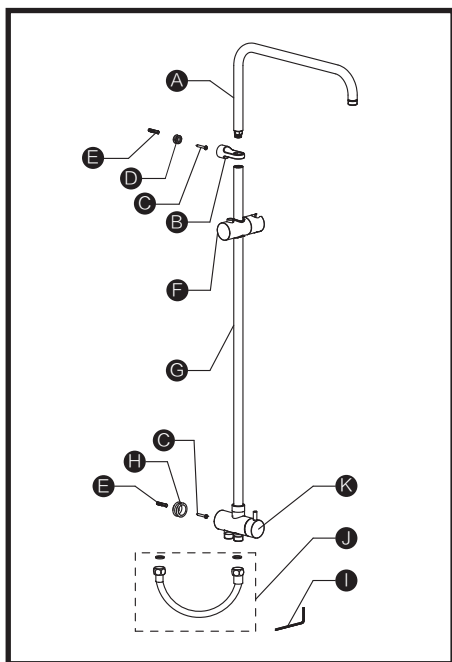


图片仅供参考  
(款式因型号而异)

Image is for reference only  
(Style varies by model)

记录购买的型号：  
(保存安装说明书以备将来参考)

Record Purchased Model Number:  
(Save instruction sheet for future reference)



## 零件清单

- A. 弯管
- B. 墙座
- C. 自攻螺钉
- D. 上固定座
- E. 膨胀管
- F. 滑座
- G. 直管
- H. 下固定座
- I. 内六角扳手
- J. 金属软管
- K. 切换阀

## Parts List

- A. Bended Tube
- B. Bracket
- C. Tapping Screw
- D. Top Fixing Ring
- E. Wall Plug
- F. Slider
- G. Straight Tube
- H. Bottom Fixing Ring
- I. Hex Wrench
- J. Flexible Hose
- K. Diverter

## 安装前注意事项

**警告：**在墙上钻任何孔时，请确保在您准备钻孔的地方没有隐藏的管道和线缆！

**申明：**本公司保留更改产品结构不另行通知的权利。

### 安装注意事项：

1. 本产品已经出厂检测及调试，请勿自行拆卸。
2. 安装前，请务必先清除墙体预埋水管内的杂质及污泥，以免影响出水功能。
3. 本产品的工作压力：0.05MPa~0.6MPa，推荐工作压力：0.2MPa~0.5MPa。
4. 当您在钻孔和安装时请注意安全。

## Precautions before installation

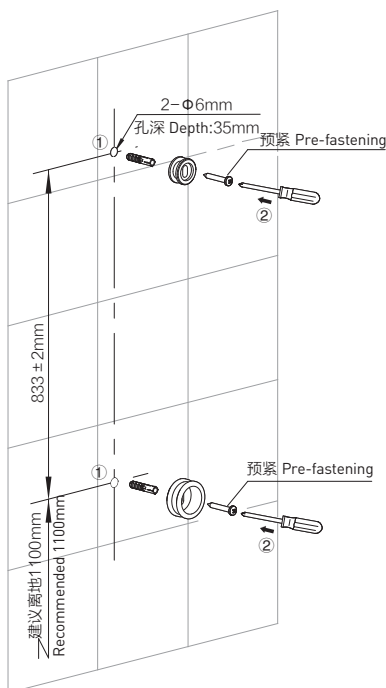
**Warning:** Please make sure there are no hidden service pipes or cables where you start to drill the wall.

**Declare:** We hereby reserve the rights to amend the specification without prior notification.

### ATTENTIONS BEFORE INSTALLATION

1. The product has passed functionality tests before sale, please do not disassemble the product by yourself at will.
2. Clear your plumbing to avoid any debris from impacting on product performance.
3. The working pressure of this product is 0.05MPa~0.6MPa. The recommended working pressure is 0.2MPa~0.5MPa.
4. Be careful in your installation.

1



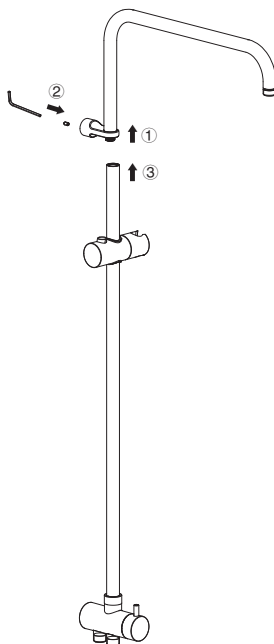
#### 安装固定座：

1. 如图示，用 $\Phi 6\text{mm}$ 的钻头在墙上钻两个深35mm的孔，孔距为833mm。将膨胀管打进孔内，膨胀管端面不能凸出墙面。
2. 固定座凹面朝外，用自攻螺钉预紧，方便后面调整。

#### Install the fixing ring:

1. Drill two 35mm depth holes by  $\Phi 6\text{mm}$  drill head with 833mm to each other in vertical. Make sure wall plug does not stick out.
2. Put two fixing rings concave outwards, and pre-fastening them with tapping screws.

2



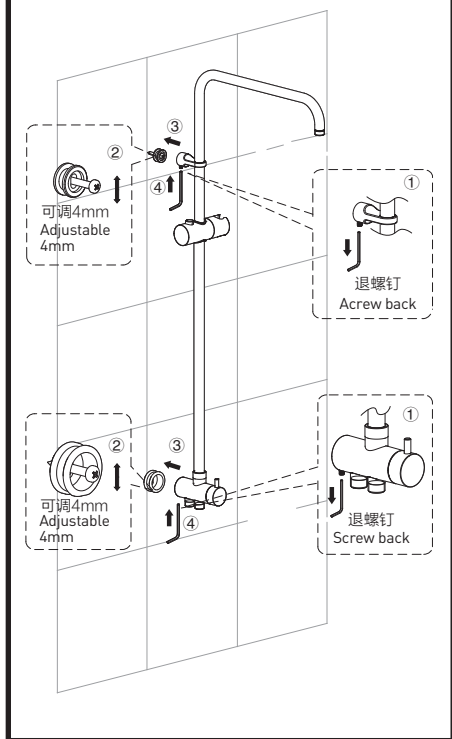
#### 组装管件：

1. 墙座套上弯管。
2. 锁紧螺钉。
3. 下直管与上弯管旋紧。

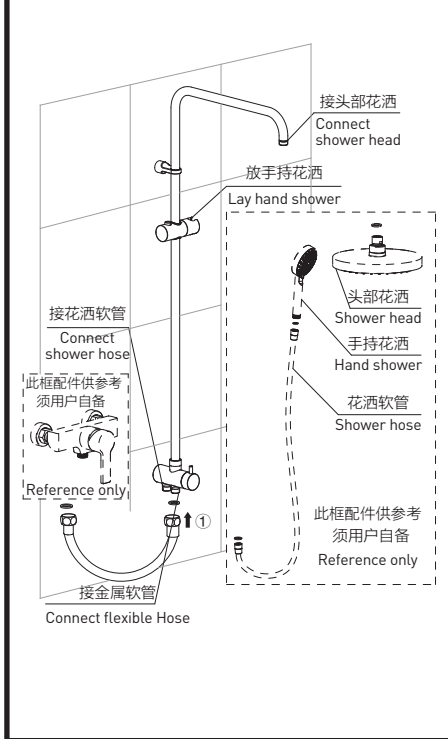
#### Assemble the tubes:

1. Put the bracket onto the bended tube.
2. Fasten screw of the bracket.
3. Screw the bended tube and the straight tube.

3



4



## 安装淋浴杆：

1. 分别退墙座和切换阀下端螺钉，使螺钉不凸出内表面。
2. 将淋浴器试装入上、下固定座，依图2微调上、下固定座，确保淋浴器能装入，然后锁紧上、下固定座。
3. 如图示，将淋浴器装入上、下固定座。
4. 分别锁紧墙座和切换阀下端螺钉。

## Install the fixing ring:

1. Screw back both screws of the bracket and the diverter.
2. Adjust the fixing rings to make the distance between the fixing rings as same as the bar shower. Then fasten them by tapping screws.
3. Put the bar shower onto the fixing rings.

## 安装其它卫浴配件(虚线产品仅供参考):

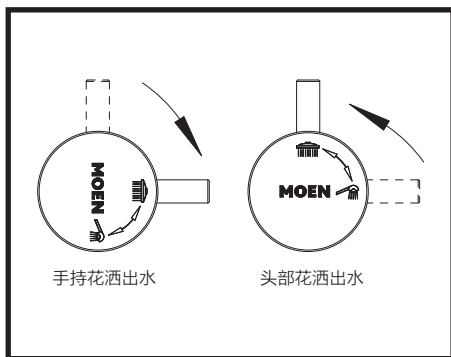
1. 将两端放有垫片的金属软管分别与切换阀和龙头连接旋紧。
2. 安装后请检查各连接处是否连接紧密、管道是否有泄漏，整体安装是否牢固。确定各部良好后，可放水试用，检查连接处是否漏水。

## Install other bathroom accessories: (Dashed area for reference only)

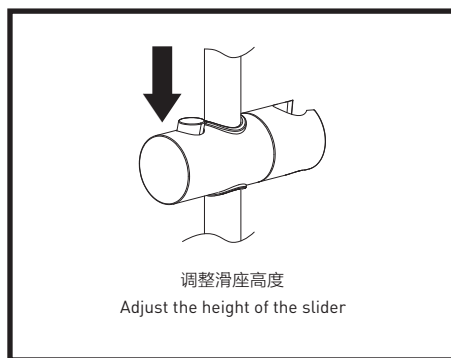
1. Connect the faucet and bar shower with hose.
2. Check up every step to ensure the stability and tightness to avoid any leaking before testing the shower spray.

## 产品使用说明和注意事项

- 切换阀把手顺时针旋转，手持花洒出水。
- 切换阀把手逆时针旋转，头部花洒出水。

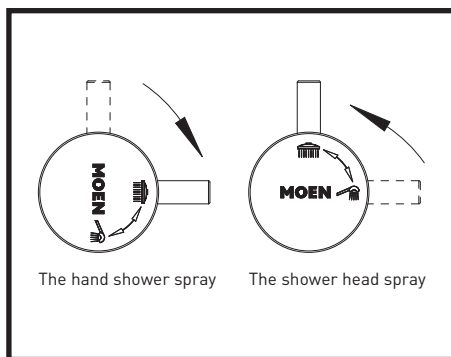


- 按下滑座的按钮，可调整滑座高度。
- 旋转滑座放手持花洒的位置，可调整手持花洒角度。

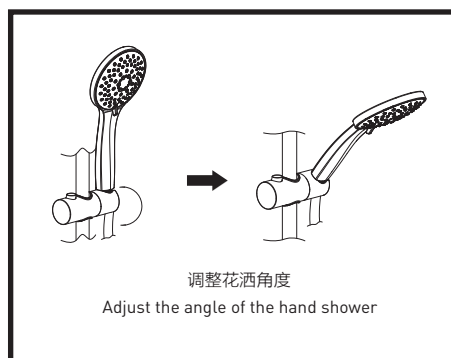


## Usage Instructions and Caution

- Clockwise rotation, the hand shower spray.
- Counterclockwise, the shower head spray.



- Press the slider button, you can adjust the height of the slider.
- Rotate the slider bracket, hand shower angle can be adjusted.



**警告：**当您使用本产品进行淋浴时，请先开启冷水然后再开启热水，以免烫伤！

### 清洁护理：

1. 为保持产品洁净，请定期清洁。
2. 先用清水或温和的液体清洁剂清洗，然后用清水冲洗，再用软棉布抹干。
3. 切勿使用任何具有酸性和研磨作用的清洁剂。
4. 切勿使用钢丝球等坚硬的物品清洗产品表面。

**Warning:** When you are showering, please turn on the cold water first, and then hot water to avoid scalding.

### MAINTENANCE:

1. Keep the product clean with clean water or mild liquid detergent regularly.
2. Rinse with clean water, and wipe with soft cotton.
3. Acid or abrasive detergents are prohibited.
4. Steel ball or hard materials are prohibited.

## 产品售后保修条款

摩恩产品是在高质量标准及生产工艺下制造的，摩恩承诺为消费者购买的洁具产品提供有期限免费保修及终身维修服务。

淋浴杆免费保修期为1年，均自消费者购买日（以摩恩产品分销商开具的发票或收据上载明日期为准）起计。

免费保修范围为产品及产品配件，由于材质及工艺原因造成的故障或损坏。免费保修期内，我们将无偿为您提供修理服务及更换发生故障的产品或产品配件。摩恩的售后服务责任仅限于对故障产品的修理，而不延及您因产品故障而发生的其他损失，法律另有规定的除外。

您需了解：产品外观碰伤、刻划痕迹，以及滥用及不正当保养所导致的故障或损坏，均不属于免费保修范围。即使在免费保修期内，属下列（1）-（5）情况之一的，需酌情收取修理费用：

1. 不能出示相符的保修卡和有效购买凭证情况的，
2. 未按使用说明告知的使用方法和注意事项造成的故障，
3. 自行拆卸、维修、改装所造成的故障和损坏，
4. 由于不可抗力等外部原因引起的故障和损坏，
5. 由于运输、搬卸、挤压等造成的损坏。

对于保修期外或不在保修范围内的产品，如需维修，摩恩将酌情收取上门费、人工费及材料费。

本保修条款仅对原始消费者和酒店行业的购买者有效，并不适用于本产品工业、商业、贸易和非酒店行业的使用。

如对本保修条款内容有任何疑问，请拨打400 630 8866咨询热线，或向当地分销商咨询。

## MOEN® 摩恩

合格证  
Compliance Certification

产品名称  
Product Name 淋浴杆  
Shower Bar

检验员  
Inspector

生产日期  
Date of Production

富俊汇赢科技（上海）有限公司  
中国（上海）自由贸易试验区新杨公路  
1800弄1号4幢207室  
邮编：201413

Fortune Brands Innovations (Shanghai) Co., Ltd.  
Room 207, Building 4, No. 1, Lane 1800, Xinyang Highway,  
China (Shanghai) Pilot Free Trade Zone

## MOEN LIMITED WARRANTY

We offer limited warranty and lifetime maintenance for Moen products, which are all manufactured with high standards of workmanship.

The period of warranty shall start from the date of purchase of the product (according to the invoice or receipt issued by Moen distributors) and shall cover a period of the following: the warranty period for shower bar is 1 year.

This warranty is your coverage against material and workmanship malfunction or defects in Moen products or components. During the warranty period, we offer free maintenance and changing of malfunctioned products or product components. Moen's after sales service liability is limited to the maintenance of faulty items and does not cover your other losses caused by product malfunction, except for otherwise stipulated by law.

Cosmetic damages (scratches, dents, etc.) and malfunction or defects caused by abuse or improper maintenance is not covered by this warranty. Although the warranty period remains valid, in case of the following conditions (1) - (5), the maintenance cost (material cost and labor cost) shall still be charged as the case may be:

1. Corresponding warranty card and valid invoice can not be presented;
2. Faults were caused by the incompliance with the instructions and precautions provided in the user's manual;
3. Damages and faults were caused by self-actuated dismantling, repair and refit;
4. Faults and damages were caused by external factors such as force majeure;
5. Damages were caused by transportation, unloading and extrusion, etc.

This warranty is valid for the original consumers only (including hotel use), and excludes industrial and commercial use of the product (except for hotel use). This card is only responsible for product maintenance rather than any other liabilities.

In the event that the product requires maintenance but exceeds the warranty period, or that the product is not covered by this warranty, labor cost and material cost shall be charged as the case may be.

Please call 400-630-8866 or contact local dealer for any question.