



## Specifications

### DESCRIPTION

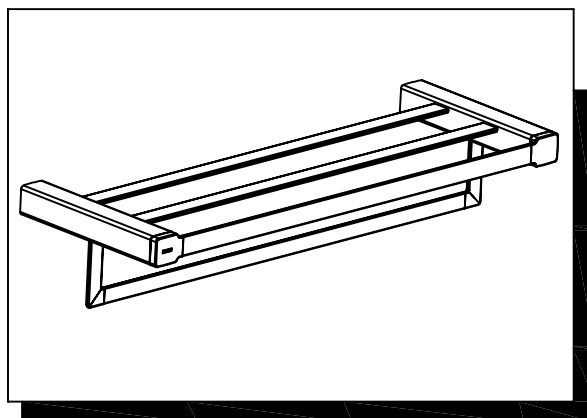
- Metal construction with chrome plated and SRS finish

### STANDARD

- Comply with QB/T 1560-2006
- Chrome plated and SRS finish pass AASS 24H grade 10.

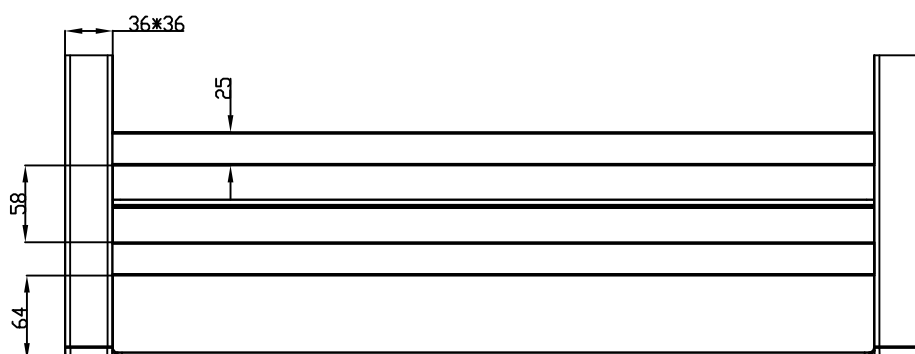
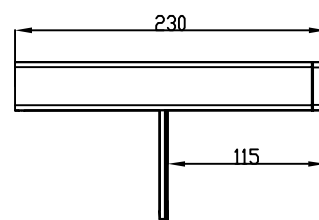
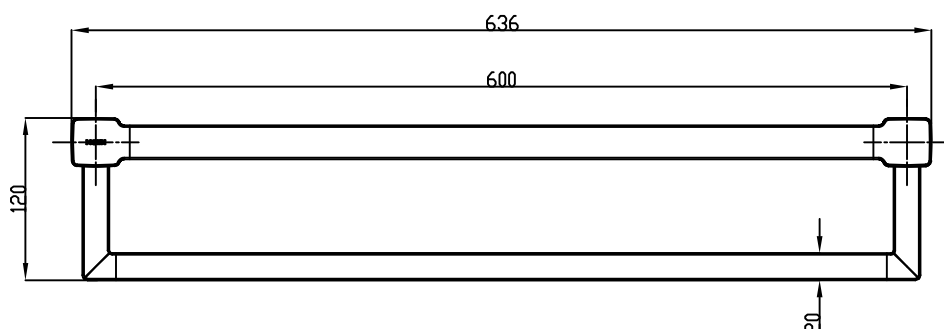
### WARRANTY

- 5 years limited warranty except artificial damage and chemicals erosion



NOTE: ALL DIMENSIONS ARE MM.

DOUBLE TOWEL SHELF  
Models: ACC1401 Series



REV:04/15